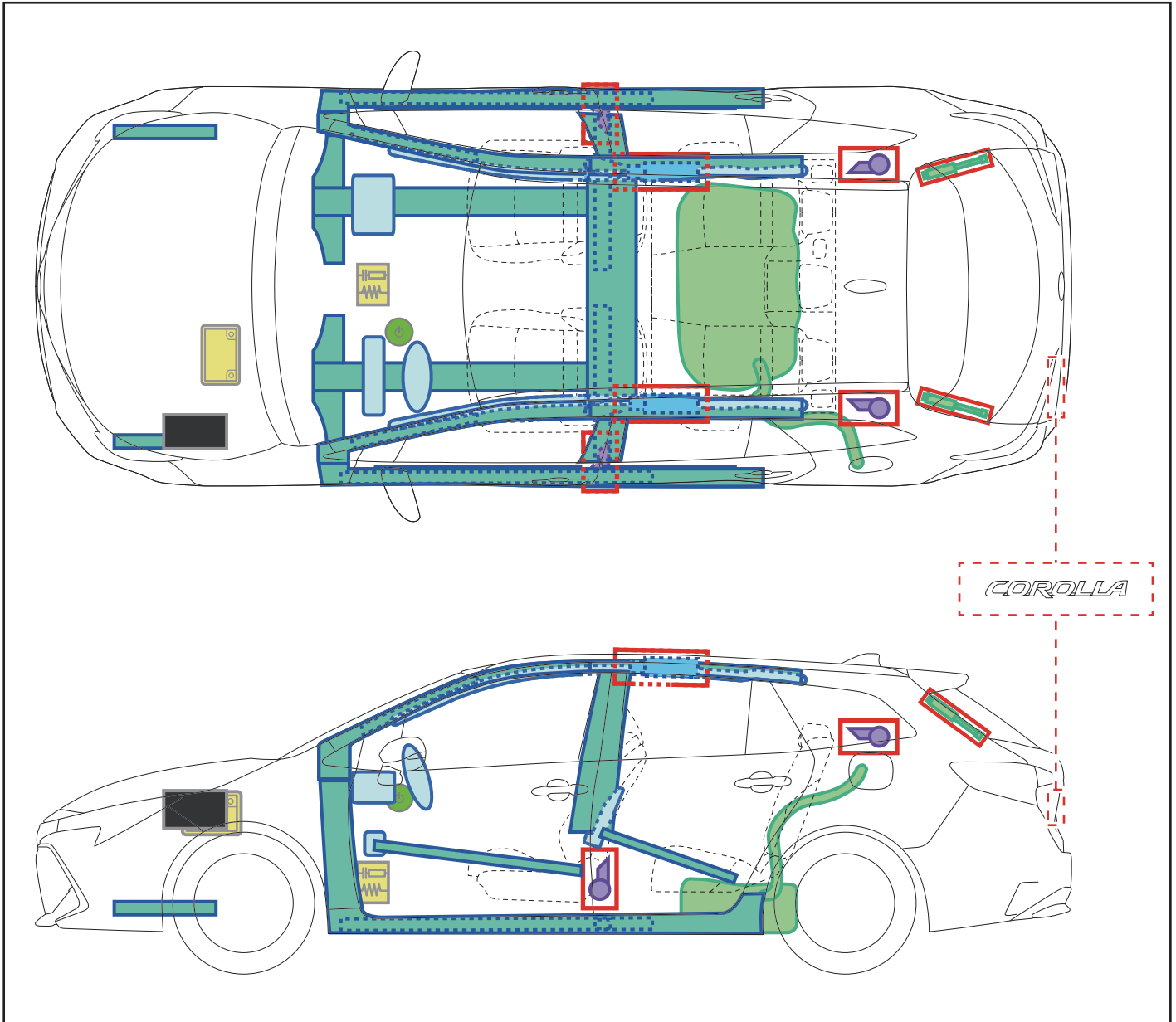












# COROLLA

TS (Kombi)

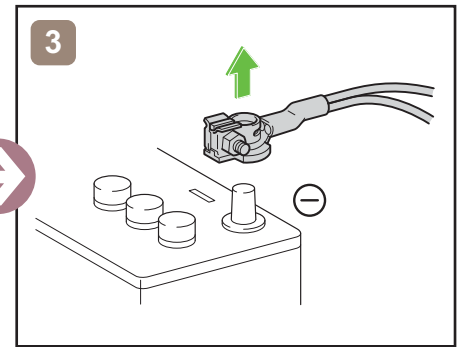
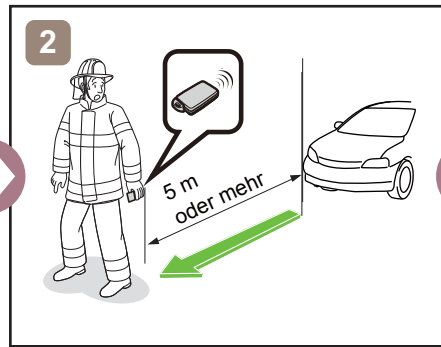
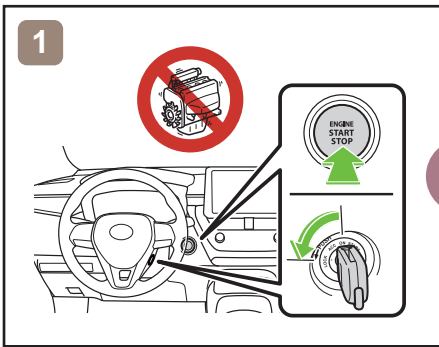
ZE1HE (EU,M)

ab 01.2019

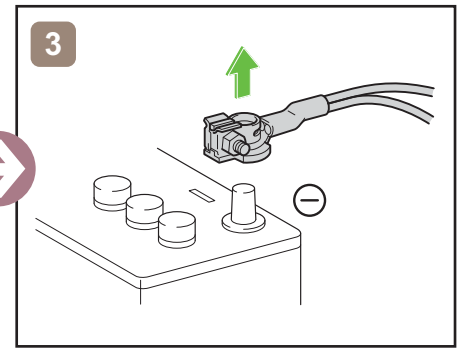
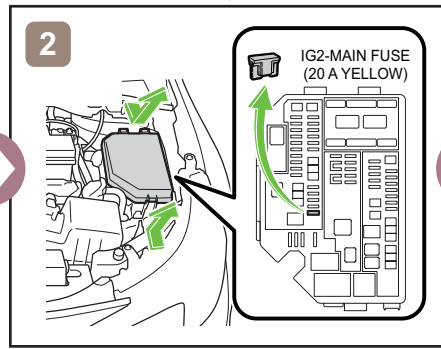
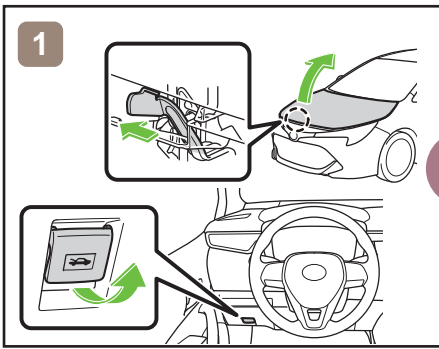


	<b>Zündschalter</b>		<b>Sicherungskasten</b>		<b>12V Batterie</b>
	<b>Airbag</b>		<b>Gasgenerator</b>		<b>Kraftstofftank</b>
	<b>Gasdruckdämpfer</b>		<b>Gurtstraffer</b>		<b>Karosserieverstärkung</b>
	<b>Steuergerät</b>				

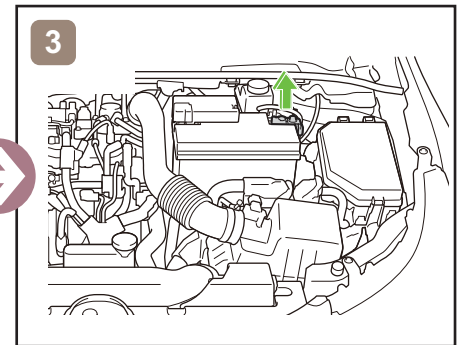
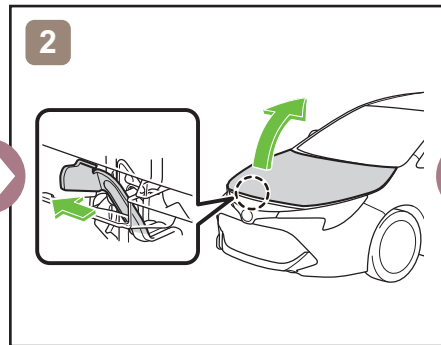
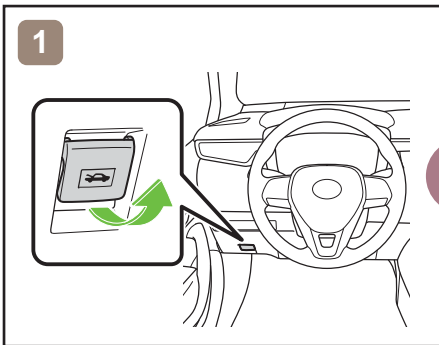
## Fahrzeug ausser Betrieb setzen



oder



## Zugang 12V-Batterie



## Hinweise zum Transport

